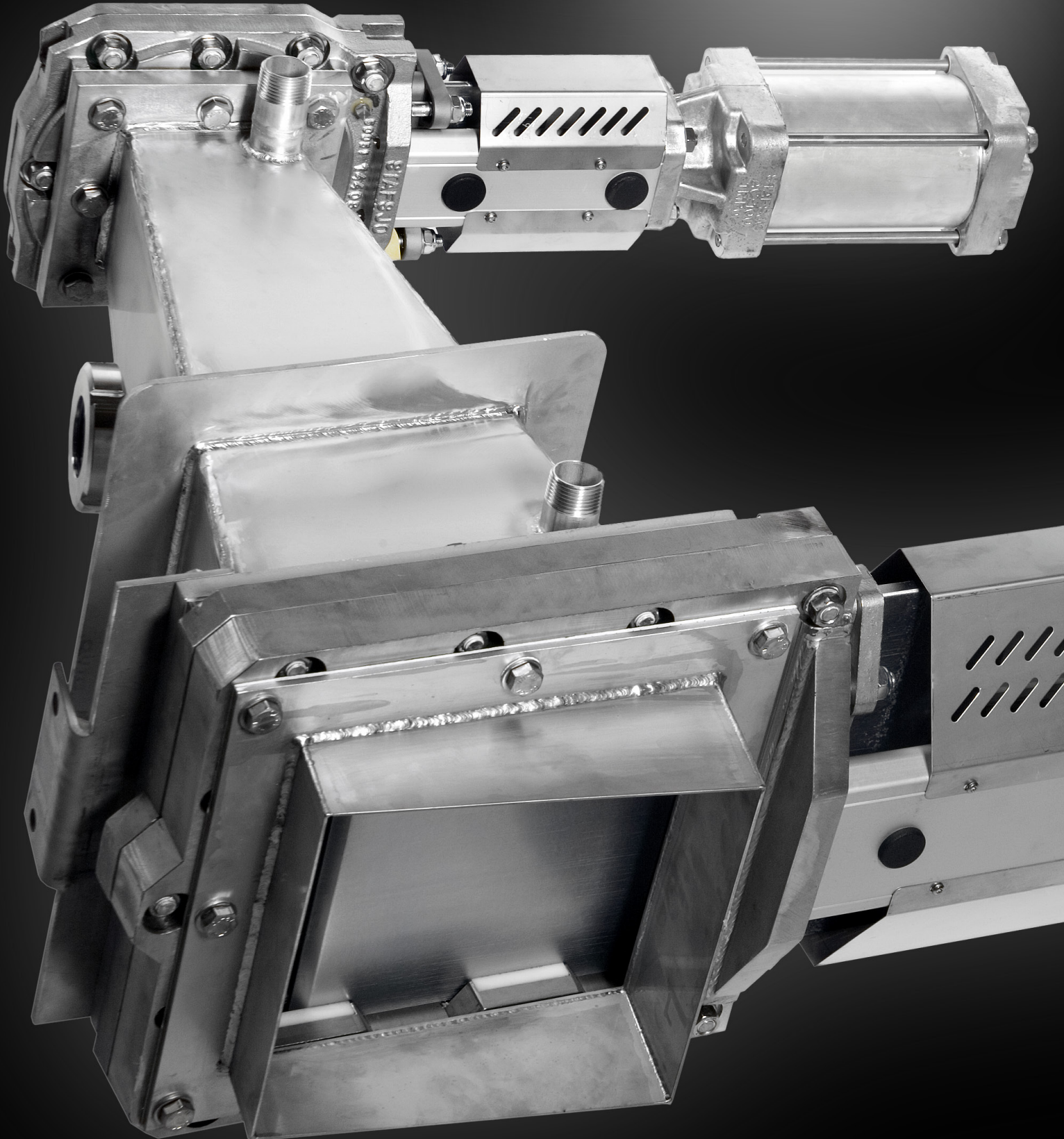


Stafsjö
SINCE 1666

JT



*Data is only for informational purpose.
All specifications are subject to change without notice.*

First in knife gate solutions

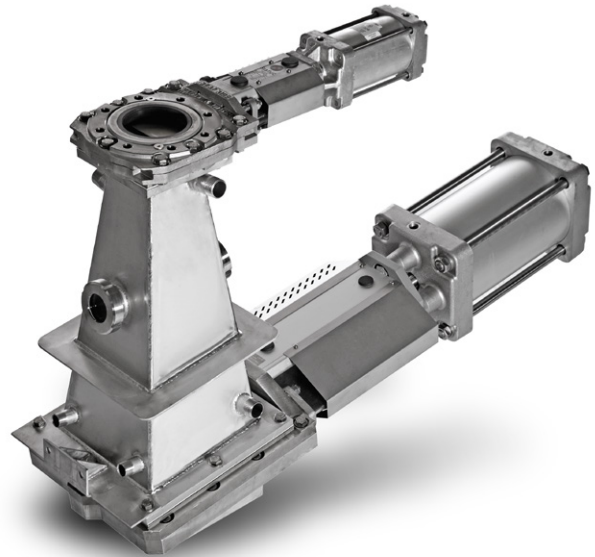
Junc Trap JT

This Junk Trap is a complete solution for tough abrasive reject separation, primarily for HD cleaners in recycled fibre lines. The JT is specially developed to minimize turbulence, erosive wear and build-up of solids and reject material.

The JT consist of the RKO knife gate valve on the inlet side, which has a circular inlet and a square outlet, and the square JTV knife gate valve on the discharge side. Both valves are designed for tough operating conditions as standard with robust valve bodies, high strength top works, hard chromed duplex gates and polyurethane seats to withstand the abrasive wear common in these type of applications.

The reject tank enables different ways of operation. It is designed with two sight glasses for observation of the reject level in the tank. Water (flush/fill) and air bleed connections are located near the top of the tank and three connections are located near the lower end in order to prevent possible clogging and congestions in dead corners.

As standard the JT is supplied with valves and reject tank packed separately. On request Stafsjö can supply the JT fully assembled. The Junc Trap JT is destined to be used only for fluids in group 2 according European regulation 1272/2008/EG.

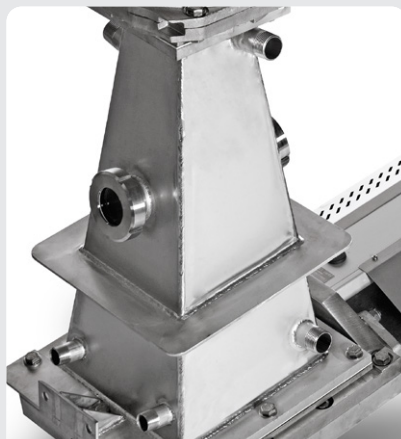


Product features



RKO as inlet valve

The robust RKO valve transform the pipe to the square tank inlet. A hard chromed duplex gate with a straight bevel edge cut through abrasive media and seal tight upon closure.



A reject tank for difficult and abrasive media

The square conic reject tank reduce rotational erosive wear and enable a full release of difficult media at drain sequence. Several connections for water and air bleed can further improve the performance and increase the wear resistance of the entire solution.



JTV as discharge valve

The square Junc Trap valve JTV is installed slightly inclined on the discharge side to ensure full release of difficult media when opened and a liquid tight shut-off when closed.

Pressure rating

Working pressure at 20°C		Differential pressure at 20°C	
Sizes	bar	Sizes	bar
DN 100 - DN 200/250x250	6	DN 100 - DN 200/250x250	6

Pressure tests

The valves are subject for pressure tests in opened and closed position with water at 20° C before delivery according to EN 12266-1:2003 rate A. The reject tank only is pressure tested with water 1,5 times max working pressure. No visually detectable leakage is allowed during the tests.

Part list

Pos	Part	Material
46	RKO valve	See data sheet
47	Gasket	KLINGERSil C-4430
48	Reject tank	Stainless steel EN 1.4404
49	Support	Stainless steel EN 1.4404
50 ¹⁾	Gasket	KLINGERSil C-4430
51 ¹⁾	Splash guard	Stainless steel EN 1.4404
52	JTV valve	See data sheet

1) Optional accessories

Connections

Pos	Connection type	DN
1	Water (flush/fill)	DN25/R 1"
2	Air (De-aeration)	DN25/R 1"
3	Water (flush/fill)	DN20/R 3/4"
4	Water (flush/fill)	DN20/R 3/4"
5	Water (flush/fill)	DN25/R 1"

Connections according to SS-ISO 7/1 as standard.
Conical Thread Based on British Standard (Whitworth) BSPT
(T = Tapered). In Sweden: R / Rc

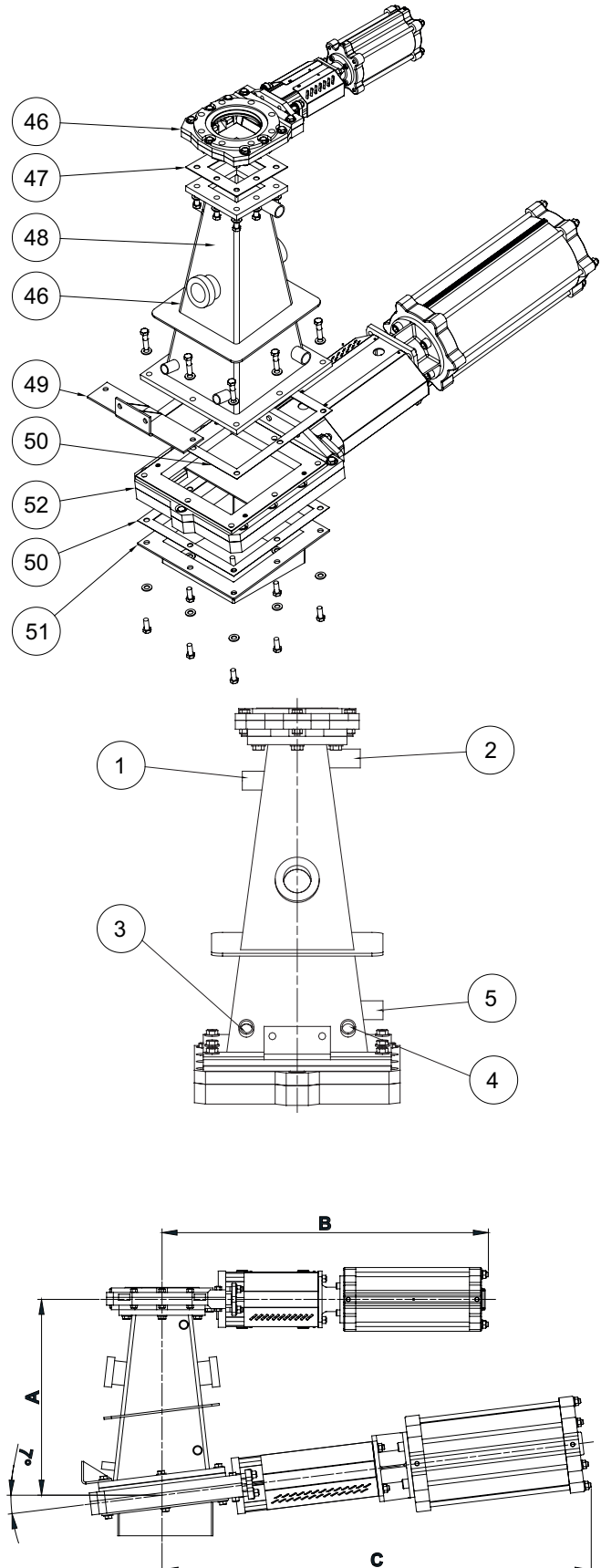
Main dimensions

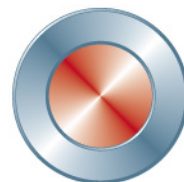
Dimension (mm)					
DN	A	B	C	Volym L ¹⁾	Weight kg ²⁾
100/250	639	617	1145	15	148
150/250	522	871	1145	17	163
200/250	524	964	1145	22	180

1) Volume (litres) reject tank.

2) Weight reject tank, knife gate valves (RKO and JTV) equipped with double-acting pneumatic cylinders.

Main dimensions are only for information. Contact Stafsjö for certified drawings.





Stafsjö
SINCE 1666

www.stafsjo.com

STAFSJÖ

50005E

Stafsjö Valves AB
SE-618 95 Stavsjö, Sweden

+46 11 39 31 00 | info@stafsjo.se
www.stafsjo.com