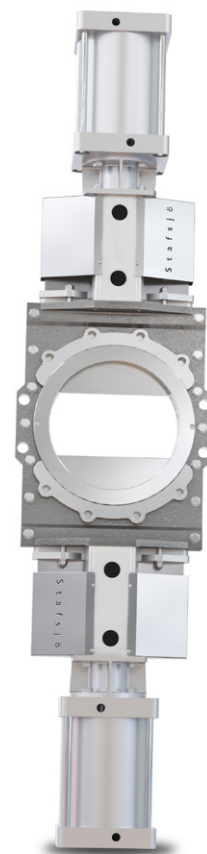
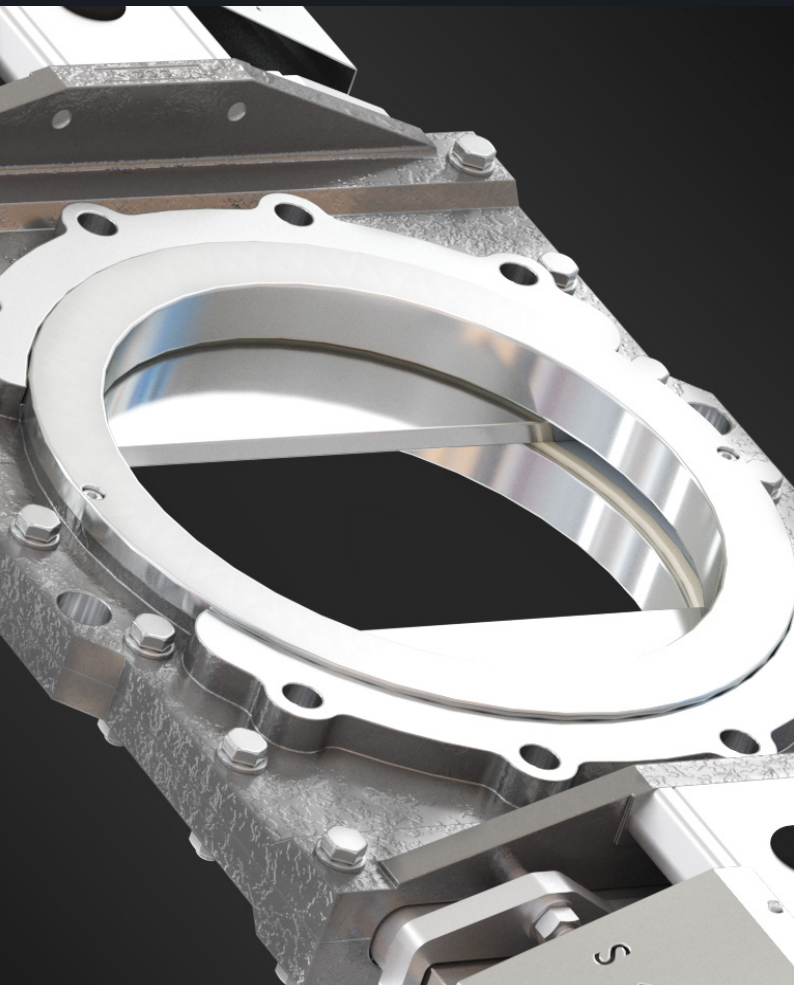


Stafsjö
SINCE 1666

Knife gate valve D2G

High speed valve for reject separation

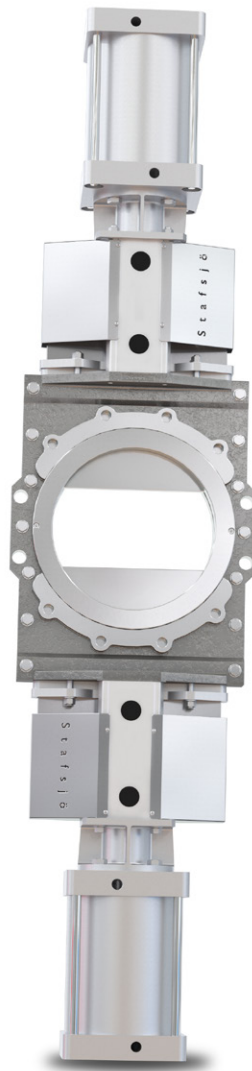
Size range:
DN 100 - DN 600 (4" - 24")



About D2G

Stafsjö's D2G is the solution for fast and reliable isolation independent of pressure direction in tough applications with large amount of solids and reject materials, in both virgin and recycled fiber lines.

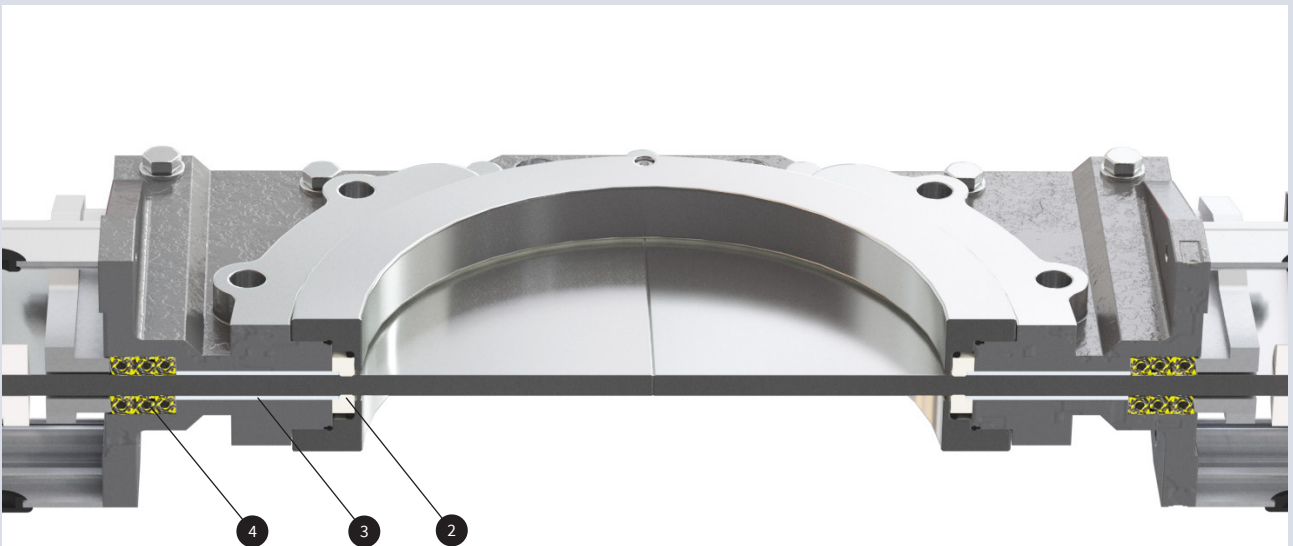
The D2G valve is modular designed and it can easily be customized with automation accessories to different process conditions. It also makes the valve easy to maintain and to rebuild for long-lasting operations. The valve has a rigid two-piece precision machined stainless steel valve body with friction reducing internal guiding supports. Two hard chromed gates provide wear resistance and high cycle speed. For optimal performance the D2G should be installed in vertical pipelines.





100 % full bore

The retainer ring system (1) on both side of the gate provide a full bore and a smooth flow path for the media. The gates are fully retracted into the valve body and protected by potential wear.



Fast and reliable shut-off

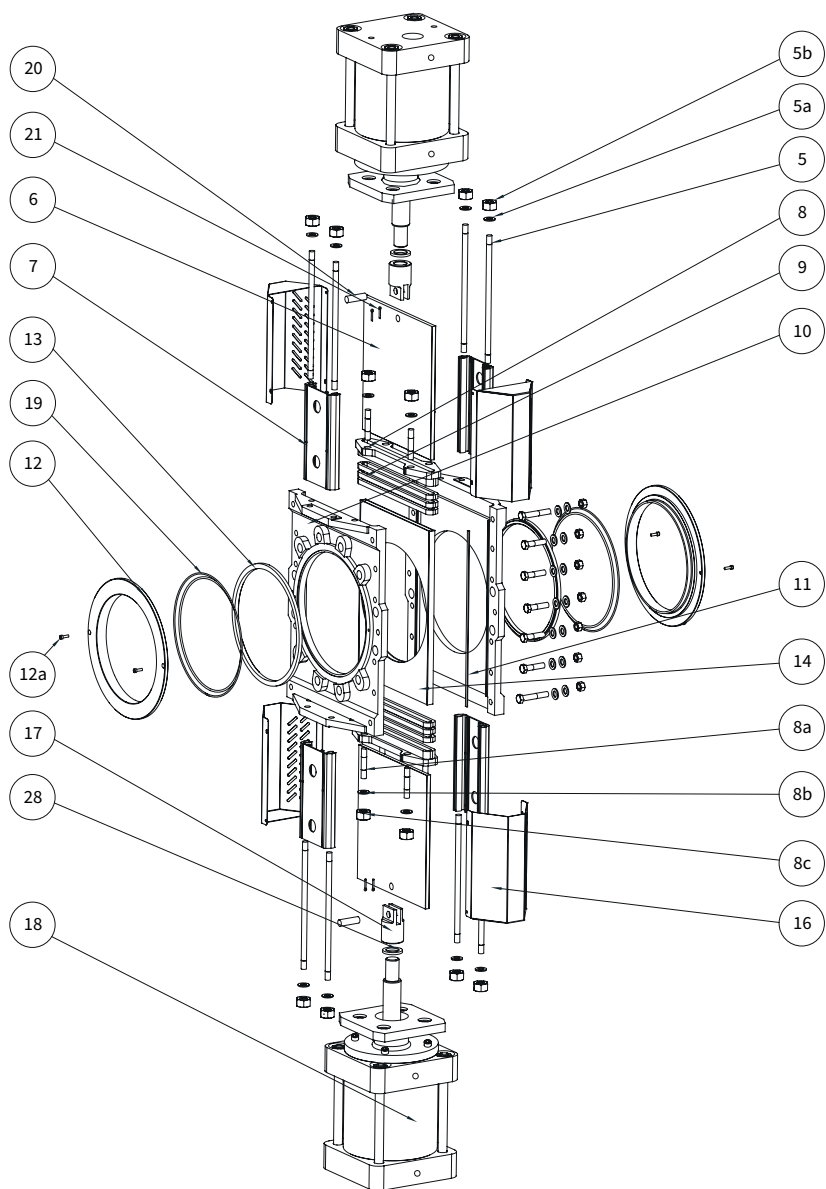
The two hard chromed gates cycles quickly into the centre of the bore and full closed position. The seats (2) and internal guiding supports (3) reduce gate friction and enable a smooth cycling. The gland box sealing system with three layers of Stafsjö's TwinPack (4) in each end of the body ensures that no media reaches surrounding environment.

Pressure class

| Max working pressure at 20 °C | | Max differential pressure at 20 °C | |
|-------------------------------|-----|------------------------------------|-----|
| DN | bar | DN | bar |
| 100 - 400 | 10 | 100 - 400 | 6 |
| 500 - 600 | 6 | 500 - 600 | 4 |

Configuration

| Standard | Design standards |
|--|--|
| <p>Sizes: DN 100 - DN 600</p> <p>Valve body: Stainless steel EN 1.4408</p> <p>Gate: Hard chromed stainless steel EN 1.4404, AISI 316L</p> <p>Retainer ring: Stainless steel EN 1.4408</p> <p>Seats: PTFE with NBR or FKM/FPM o-rings</p> <p>Box packing: TwinPack</p> <p>Top works: Stainless steel tie rods encapsulated in aluminum beams including stainless steel gate guards on automated valves</p> <p>Actuators: Double-acting CFP pneumatic cylinders including one quick exhaust valve on each pneumatic cylinder</p> <p>Flange drillings: EN 1092 PN 10, ASME/ANSI B16.5 Class 150 series A or JIS B 2238 10K</p> <p>See accessory data sheet for automation options.</p> | <p>Face-to-face dimensions Stafsjö manufacturing standard.</p> <p>Design, manufacturing, inspection and test According to pressure equipment directive 2014/68/EU category I and II module A2. The valves are CE marked when it is applicable.</p> <p>The D2G is subject for pressure tests before delivery in opened position only with water at 20 °C according to EN 12266-1:2003 rate A. No visually detectable leakage is allowed for duration of the test.</p> <p>On request Stafsjö can provide 2.2 test report and 3.1 inspection certificate according to EN 10204.</p> <p>Contact Stafsjö for further information on ATEX approved solutions.</p> <p>Service temperature Information to determine minimum and maximum temperature for the knife gate valve is available on stafsjo.com/support/temperatures/.</p> |

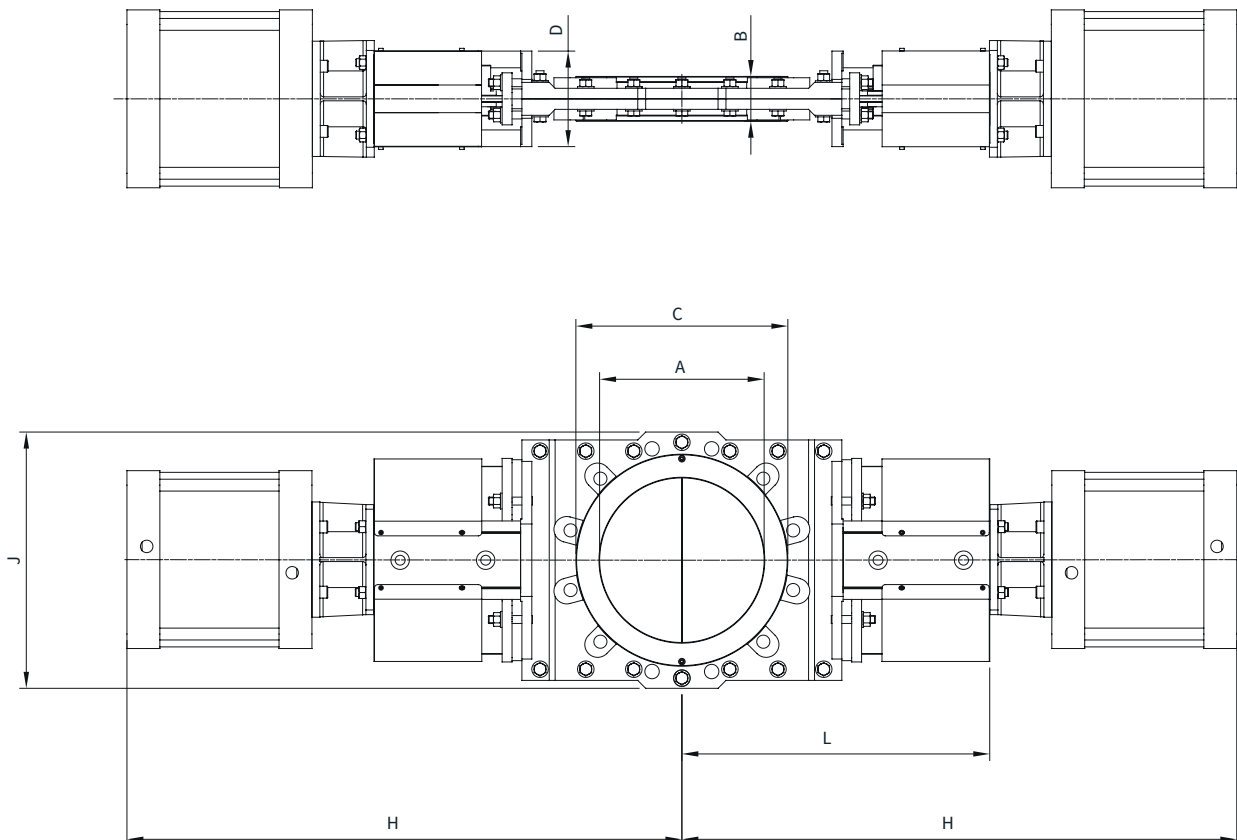


Part list

| Pos | Detail | Material |
|-----------------|-------------|--|
| 5 | Tie rod | Stainless steel A2 |
| 5a | Washer | Stainless steel A2 |
| 5b | Nut | Stainless steel A2 |
| 6 | Gate | Hard chromed stainless steel EN 1.4404 |
| 7 | Beam | Anodized aluminum |
| 8 | Gland | Stainless steel EN 1.4408 |
| 8a | Stud bolt | Stainless steel A2 |
| 8b | Washer | Stainless steel A2 |
| 8c | Nut | Stainless steel A2 |
| 9 ¹⁾ | Box packing | TwinPack |
| 10 | Valve body | Stainless steel EN 1.4408 |
| 11 | Body gasket | ≤ DN 300: PTFE, ≥ DN 350: FKM/FPM |

| Pos | Detail | Material |
|------------------|--------------------|---------------------------|
| 12 | Retainer ring | Stainless steel EN 1.4408 |
| 12a | Locking screw | Stainless steel A2 |
| 13 ¹⁾ | Seat | PTFE |
| 14 ¹⁾ | Guiding support | POM |
| 16 | Gate guard | Stainless steel EN 1.4301 |
| 17 | Gate clevis | Stainless steel EN 1.4305 |
| 18 | Pneumatic cylinder | See data sheet |
| 19 | O-ring | NBR or FKM/FPM |
| 20 | Clevis pin | Stainless steel EN 1.4305 |
| 21 | Split pin | Stainless steel A2 |
| 28 | Locking nut | Stainless steel EN 1.4305 |

1) Recommended spare parts



Main dimensions (mm)

| DN | A | B | C | D | H | I ¹⁾ | J | L |
|-----|-----|-----|-----|-----|------|-----------------|-----|-----|
| 100 | 100 | 52 | 153 | 80 | 504 | CFP100 | 208 | 266 |
| 125 | 125 | 56 | 187 | 80 | 541 | CFP100 | 241 | 291 |
| 150 | 150 | 56 | 212 | 80 | 647 | CFP160 | 266 | 319 |
| 200 | 200 | 60 | 268 | 145 | 765 | CFP160 | 333 | 411 |
| 250 | 250 | 68 | 322 | 145 | 870 | CFP200 | 389 | 468 |
| 300 | 300 | 78 | 372 | 145 | 959 | CFP200 | 451 | 532 |
| 350 | 350 | 78 | 430 | 178 | 1061 | CFP200 | 505 | 609 |
| 400 | 400 | 89 | 481 | 178 | 1154 | CFP250 | 571 | 666 |
| 500 | 500 | 114 | 586 | 260 | 1351 | CFP250 | 679 | 801 |
| 600 | 600 | 114 | 685 | 260 | 1524 | CFP250 | 790 | 924 |

1) Recommended sizing of double-acting pneumatic cylinder type CFP at normal operation with 5 bar air pressure. For other operating conditions, contact Stafsjö or your local representative for advice.

Main dimensions are only for information. Contact Stafsjö for certified drawings.

Flange drilling according to EN 1092 PN 10

| DN | 100 | 125 | 150 | 200 | 250 | 300 | 350 | 400 | 500 | 600 |
|---------------------------------|-----|-----|-----|-----|-----|-----|-----|-----|-----|-----|
| Bolt circle diameter (mm) | 180 | 210 | 240 | 295 | 350 | 400 | 460 | 515 | 620 | 725 |
| Number of throughgoing bolts | 4 | 4 | 4 | 4 | 4 | 4 | 4 | 4 | 4 | 4 |
| Number of tapped holes/side | 4 | 4 | 4 | 4 | 8 | 8 | 12 | 12 | 16 | 16 |
| Bolt size | M16 | M16 | M20 | M20 | M20 | M20 | M20 | M24 | M24 | M27 |
| Bolt lengths ¹⁾ (mm) | 14 | 16 | 16 | 14 | 18 | 23 | 20 | 25 | 29 | 29 |

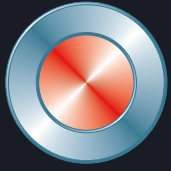
Flange drilling according to ASME/ANSI B16.5 Class 150 series A

| DN | 100 | 125 | 150 | 200 | 250 | 300 | 350 | 400 | 500 | 600 |
|---------------------------------|---------|---------|---------|---------|--------|--------|-------|-------|----------|----------|
| Bolt circle diameter (mm) | 190,5 | 215,9 | 241,3 | 298,4 | 361,9 | 431,8 | 476,3 | 539,8 | 635 | 749,3 |
| Number of throughgoing bolts | 4 | 4 | 4 | 4 | 4 | 4 | 4 | 4 | 4 | 4 |
| Number of tapped holes/side | 4 | 4 | 4 | 4 | 8 | 8 | 8 | 12 | 16 | 16 |
| Bolt size (UNC) | 5/8"-11 | 3/4"-10 | 3/4"-10 | 3/4"-10 | 7/8"-9 | 7/8"-9 | 1"-8 | 1"-8 | 1 1/8"-7 | 1 1/4"-7 |
| Bolt lengths ¹⁾ (mm) | 14 | 16 | 16 | 14 | 18 | 23 | 20 | 25 | 29 | 29 |

Flange drilling according to JIS B 2238 10K

| DN | 100 | 125 | 150 | 200 | 250 | 300 | 350 | 400 | 500 | 600 |
|---------------------------------|-----|-----|-----|-----|-----|-----|-----|-----|-----|-----|
| Bolt circle diameter (mm) | 175 | 210 | 240 | 290 | 355 | 400 | 445 | 510 | 620 | 730 |
| Number of throughgoing bolts | 4 | 4 | 4 | 4 | 4 | 4 | 4 | 4 | 4 | 4 |
| Number of tapped holes/side | 4 | 4 | 4 | 8 | 8 | 12 | 12 | 12 | 16 | 20 |
| Bolt size | M16 | M16 | M20 | M20 | M22 | M22 | M22 | M24 | M24 | M30 |
| Bolt lengths ¹⁾ (mm) | 14 | 16 | 16 | 14 | 18 | 23 | 20 | 25 | 29 | 29 |

1) Add the values with the thickness of flanges, washers and gaskets.



Stafsjö
SINCE 1666

© Stafsjö 2022. Data is only for informational purpose. All specifications are subject to change without notice.

Stafsjö Valves AB
SE-618 95 Stavsjö, Sweden

+46 11 39 31 00 | sales@stafsjo.se | www.stafsjo.com

A Bröer Group Company